

D25-F-M-V1A

1. Description:

D25-F-M-V1A is a simple DB25 Female to DB25 Male pass-through adapter breakout board. It brings all 25 pins of a DB25 Female and a DB25 Male connector to screw terminal blocks and headers for easy testing, prototyping and breadboard connection. All 25 pins of the Female connector directly connect to the Male connector. User can also use the two 13 pins headers on both sides of the breakout board to connect on breadboard or prototype PCB.

2. Features:

- All 26 pins (including shield) of a DB25 Female and a DB25 Male connector brought out to headers and screw terminal blocks
- All 25 pins of a DB25 Female connector directly connect to a DB25 Male connector.
- Various connecting method chosen by users.
- 4 X 3.0mm mounting holes
- 2.09"(53.2mm)X2.95"(75mm) board dimensions

3. Parts:

- 1) 1pc X D25-F-M-V1A PCB
- 2) 1pc X DB25 Female Connector
- 3) 1pc X DB25 Male Connector
- 4) 2pc X 8pin 0.1"(2.54mm) spacing terminal block
- 5) 2pc X 5pin 0.1"(2.54mm) spacing terminal block
- 6) 1pc X 26pin 0.1"(2.54mm) header
- 7) 4pcs X4-40UNC diameter 8.3mm long screws

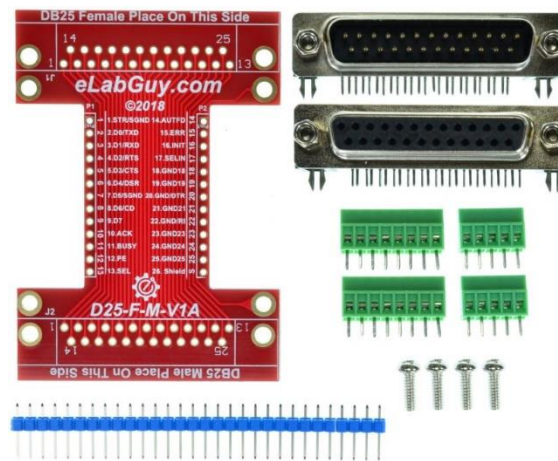
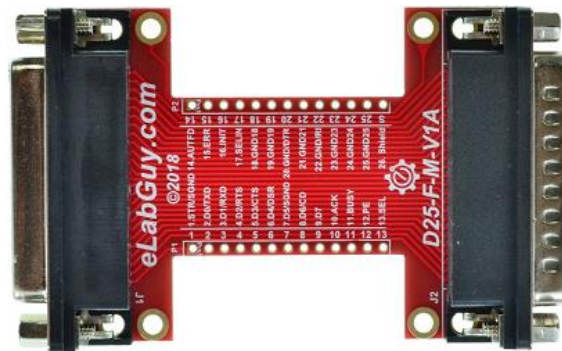


Figure 1: Parts inside the kit
(Note: the module is not assembled, user can decide which connector to use on the module.)

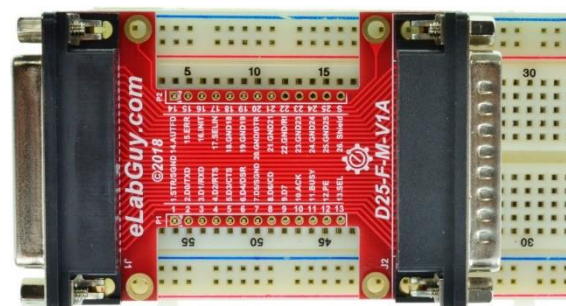


Figure 2: Example of connecting the D25-F-M-V1A on a proto PCB (Note: This picture only shows the pins spacing, actual use may not be used on a breadboard)



Figure 3: D25-F-M-V1A with headers



Figure 4: D25-F-M-V1A with terminal blocks

Related products from eLabGuy:



D25-F-M-V1A



D25-M-M-V1A



D25-F-F-V1A



D25-FC-MC-V1A



D25-MC-MC-V1A



D25-FC-FC-V1A